

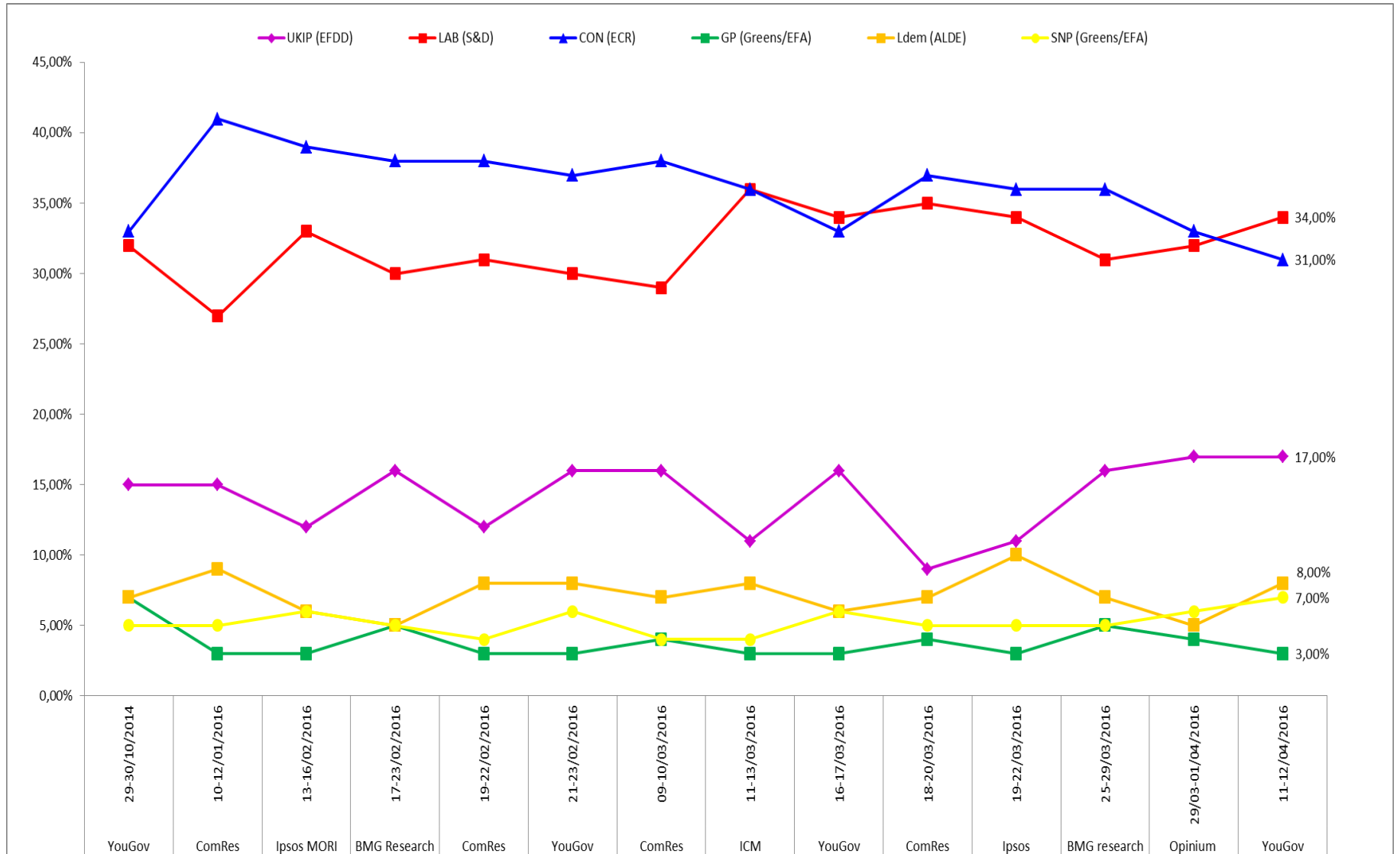
UK : EU Referendum Opinion Polls

14th April 2016

DG COMM
Public Opinion Monitoring Unit



Voting Intention Polls



Structure of the 2014 Population

Eurostat

	From 15 to 24 years	From 25 to 39 years	From 40 to 55 years	From 55+
EU28	11,32%	19,98%	21,83%	31,26%
UK	12,74%	19,74%	21,00%	26,59%

EU Referendum Polls

From 08th to 12th April 2016

ICM

TNS

YOUNGOV

Fieldwork

Fieldwork

Fieldwork

8th – 10th April 2016

7th – 11th April 2016

11th - 12th April 2016

Sample and Method

Sample and Method

Sample and Method

2030 online

1198 online

1693 online

**Remain a member of the
EU**

42%

35%

39%

Leave the EU

45%

35%

39%

Don't know

12%

30%

22%

ICM

Online Poll (8th – 10th April 2016)

Sample = 2030

<http://www.icmunlimited.com/media-centre/media-center/eu-referendum-tracker-12th-april-2016>

Q: Should the United Kingdom remain a member of the European Union or leave the European Union?

	Total	Gender		Age				Social Class				Vote in 2015 General Election*			
		Male	Female	18-24	25-34	35-64	65+	AB	C1	C2	DE	Cons	Lab	UKIP	LibDem
Remain a member of the EU	42	40	45	67	57	39	32	52	45	36	31	34	61	5	62
Leave the EU	45	51	39	26	28	47	57	37	43	48	58	54	26	89	22
Don't Know	12	9	16	7	15	13	10	11	12	15	11	12	12	7	17

TNS

Online(7th – 11th April 2016)

Sample = 1198

<http://www.tns-bmrb.co.uk/press-release/tns-poll-still-no-breakthrough-referendum-campaigns>

Q: Should the United Kingdom remain a member of the European Union or leave the European Union?

	Total	Gender		Age					Social Class		Vote in 2015 General Election			
		Male	Female	18-24	25-34	35-44	45-54	55+	ABC1	C2DE	Cons	Lab	UKIP	LibDem
Remain a member of the EU	35	41	29	43	40	31	32	34	39	29	35	53	7	48
Leave the EU	35	38	32	16	31	32	33	44	32	41	45	24	79	29
Don't Know	30	20	39	41	29	37	35	22	29	30	20	23	14	23

YOUNGOV

Online(11th-12th April 2016)

Sample = 1693

https://d25d2506sfb94s.cloudfront.net/cumulus_uploads/document/ugdbpjyfyf/TimesResults_160412_VI&EURef_W.pdf

Q: Should the United Kingdom remain a member of the European Union or leave the European Union?

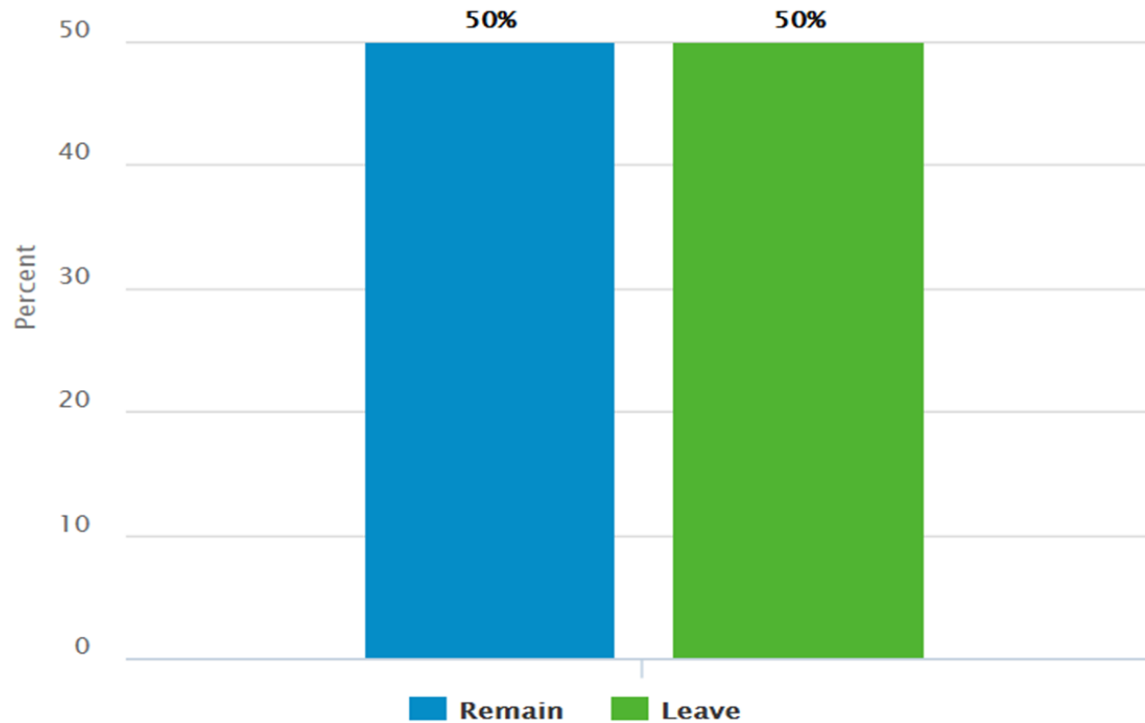
	Total	Gender		Age				Social Class		Vote in 2015 General Election			
		Male	Female	18-24	25-49	50-64	65+	ABC1	C2DE	Cons	Lab	Lib Dem	UKIP
Remain a member of the EU	39	41	37	56	43	34	26	48	26	31	60	57	5
Leave the EU	39	42	37	20	31	49	58	34	47	48	28	22	89
Don't Know	22	17	27	24	27	17	16	19	26	21	12	21	6

EU Referendum Poll of Polls

<http://whatukthinks.org/eu/opinion-polls/poll-of-polls/>

Referendum Vote Intention Poll of Polls

Latest average of six polls from 29/03/16 to 12/04/16

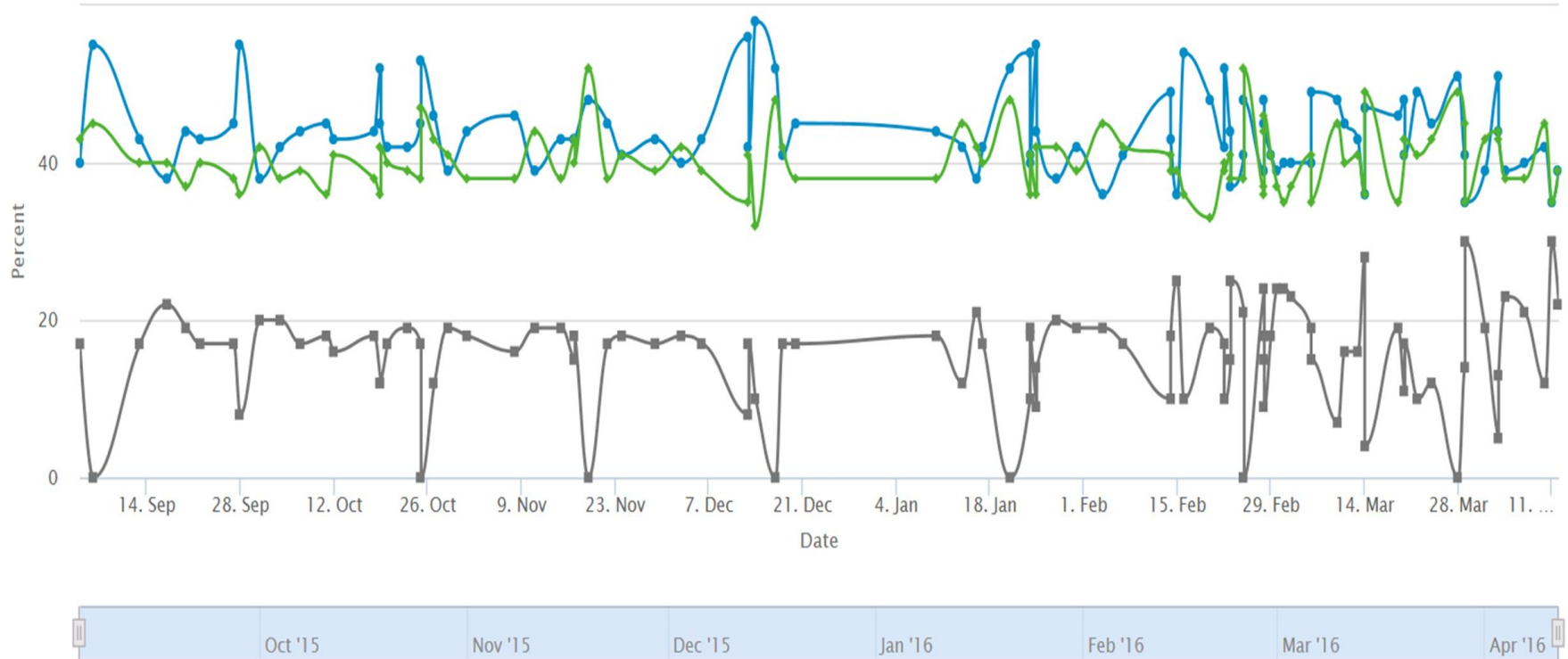


The bar chart shows the average of the **six most recent polls**, the fieldwork for which was conducted between **29 March and 12 April 2016**. It is based on **three polls** by YouGov, **two polls** by ICM, and **one** by TNS. The **most recent** additions are a poll conducted by ICM between **8 and 10 April**, one by TNS between **7 and 11 April** and another by YouGov between **11 and 12 April**.

EU Referendum Poll of Polls

<http://whatukthinks.org/eu/questions/should-the-united-kingdom-remain-a-member-of-the-eu-or-leave-the-eu/>

From 04/09/2015 To 12/04/2016



NB:
EU Poll of Polls is based on the average share of the vote for 'Leave' and 'Remain' in **the six most recent polls** of voting intentions in the EU Referendum.